



Swisspacer Essential

Designed in Switzerland.
Made for Asia.
Trusted where it matters.

| swisspacer |
SAINT-GOBAIN

the edge
of tomorrow


SAINT-GOBAIN

Where quality protects your business

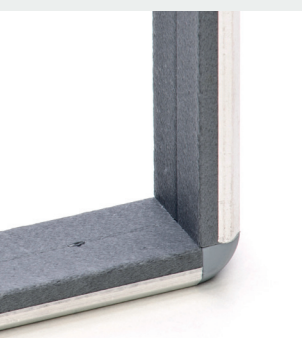
Swisspacer Essential delivers reliable Swiss-engineered performance for standard applications—without the risk and inconsistency of copy products. It is designed as a dedicated solution for the Asian market, addressing local needs with precision, practicality and value.


With Swisspacer Essential, this is your start into the best quality on the market. It combines trusted Swiss engineering with a cost-efficient approach, ensuring dependable performance across everyday applications. No compromising on cost and quality efficiency. No compromising on values. No compromising on the original.

Positioned as the “safe Swiss choice” at entry level, Swisspacer Essential offers peace of mind in a highly competitive environment. It is built to replace low-quality copycats that often lead to inconsistency, production risks, and long-term costs. Instead, it delivers controlled quality, reliable performance, and confidence in every project.

The product comes in a classic black design, aligned with market expectations and modern application needs. Available in the most frequently used dimensions ensures flexibility and seamless integration into diverse production processes and window systems.

Standard colours



 Push-fit corner

Simple Processing. Reliable Results.

Swisspacer Essential is designed specifically for frame production using corner keys. This ensures a simple, reliable, and controlled manufacturing process—ideal for standard applications. Frames can be produced efficiently with consistent quality, while still allowing for a wide range of dimensions. Our portfolio also includes the necessary accessories to support this processing method.

Do you have any questions about the product or its processing? Swisspacer can assist with comprehensive service – from the initial consultation to training on production regarding the optimal manufacturer of frames and insulating glass units with the Swiss warm edge.



Find out more about our services.

<https://www.swisspacer.com/en/services>

The safer choice for your production

Reliable performance and controlled quality that help you avoid disruptions, reduce risks, and build long-term trust.

Cheaper products often cost more — through rejects, warranty claims, and customer dissatisfaction. What may seem like savings at the start can quickly turn into hidden costs across the entire production process.

Swisspacer Essential helps manufacturers reduce these risks by providing consistent, controlled quality and reliable performance in standard applications. It ensures smoother production, fewer disruptions, and greater confidence in every unit produced.

By replacing unreliable copy products with a trusted Swiss-engineered solution, manufacturers can protect not only their processes, but also their reputation in the market. With Swisspacer Essential, efficiency and reliability go hand in hand — turning everyday production into a safer investment.

Protected reputation

Deliver quality your customers can rely on.

Stable production

Keep your processes running smoothly and efficiently.

Available widths

12 mm

14 mm

16 mm

18 mm

6,5 mm



Choose Certainty Over Compromise

Swisspacer Essential is compliant with KSL 2003 Norm.

IFT report coming soon.



Performance you can rely on

Reliable performance and controlled quality that help you avoid disruptions, reduce risks, and build long-term trust.

- Reduced rejection rates
- Fewer production interruptions
- Brand protection for manufacturers
- Consistent and controlled product quality
- Reliable performance batch after batch
- Lower risk of warranty claims
- Improved production efficiency
- Less downtime and rework
- Greater process stability
- Increased customer satisfaction

Performance data

	Thermal performance	Lambda value	Fogging test	Durability/lifetime	Sealant	KSL 2003
Swisspacer Essential	Standard	0,25* W/mK	✓	5 years	Silicone	✓



We support you!

Discover how Swisspacer can take your windows and façades to the next level.



Do you have any questions about our solutions or services? Contact us!