

舒口舍

Engineered in Switzerland

www.swisspacer.com

SWISSPACER

The edge of tomorrow.



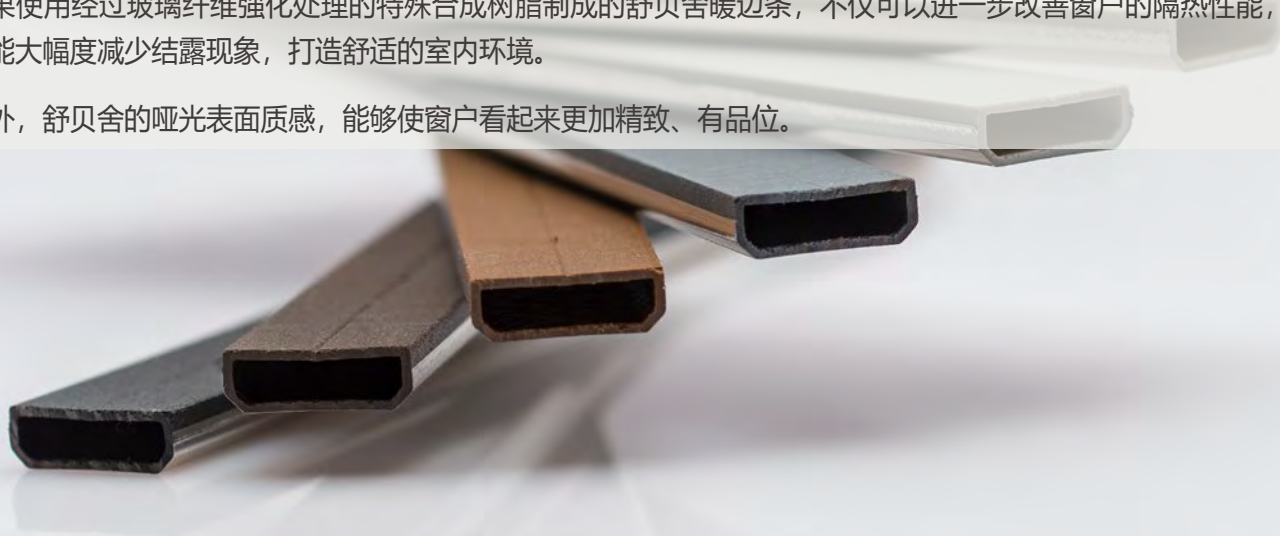
舒贝舍暖边条

WARM EDGE SWISSPACER

如果外部温度低，窗户上隔热功能薄弱的部位就会出现结露现象。因为现有的中空玻璃采用了导热率高的铝间隔条，所以到了寒冷的冬季，从玻璃的边缘开始就会出现结露现象。

如果使用经过玻璃纤维强化处理的特殊合成树脂制成的舒贝舍暖边条，不仅可以进一步改善窗户的隔热性能，还能大幅度减少结露现象，打造舒适的室内环境。

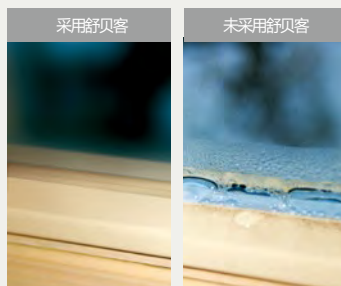
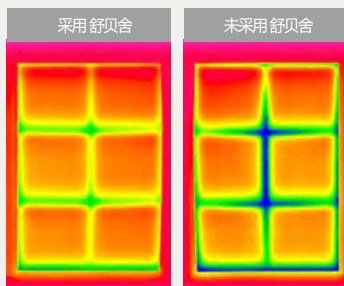
另外，舒贝舍的哑光表面质感，能够使窗户看起来更加精致、有品位。



特点及优点

● 高效节能窗结构

相对于窗框或隔热玻璃等级的提高，可以更为经济地降低窗户的热对流。



- **防止产生结露**

抑制玻璃窗户边缘的热桥现象，防止出现结露及发霉现象。

- 耐久性强的窗户

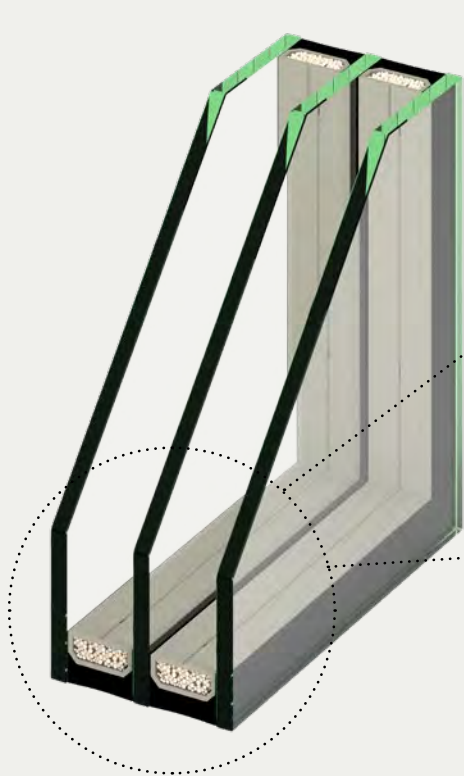
使用了防止水分和气体渗透的特殊锡纸，加强了中空玻璃的耐久性。



- **经过验证的性能**

持有由国际建筑检测机构罗森海姆 (ift Rosenheim) 和经过 BF德国平板玻璃协会认证发行的经过认证的检测报告。

| 种类



舒贝舍的ADVANCE是最为广泛使用的通用产品，性价比极高。
(导热率: 0.29w/mK)

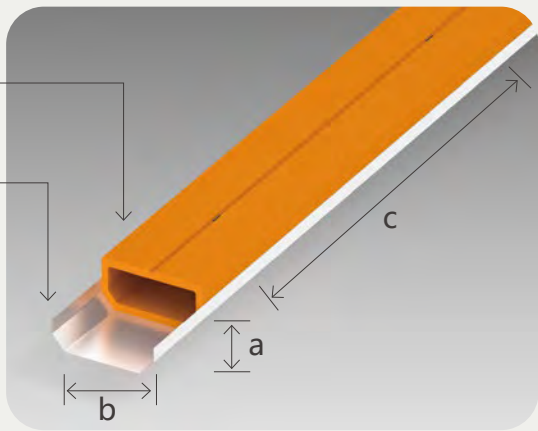


舒贝舍的ULTIMATE是引领市场的隔热条，拥有世界最高的隔热性能。
(导热率: 0.14w/mK)

| 规格

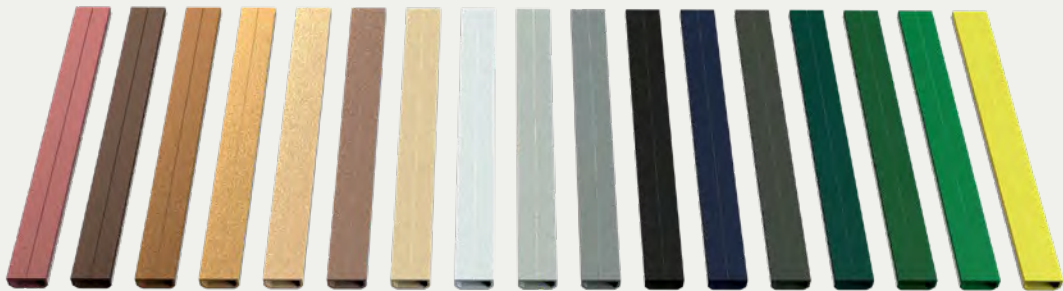
材质 | 主体: 用玻璃纤维加以强化的SAN合成树脂
| 底面: 防漏气特殊合成锡纸

规格 | ·a高: 6.5mm
| ·b宽: 根据规格而不同
| ·c长: 5.1M



| 规格及颜色

·舒贝舍提供17种颜色，提供各种窗户颜色的定制型设计选项。
·规格: 06、08、10、11、12、14、15、16、18、20、22、24、27、32、36、42mm



*部分颜色和规格，需事先咨询。

EIFFEL TOWER

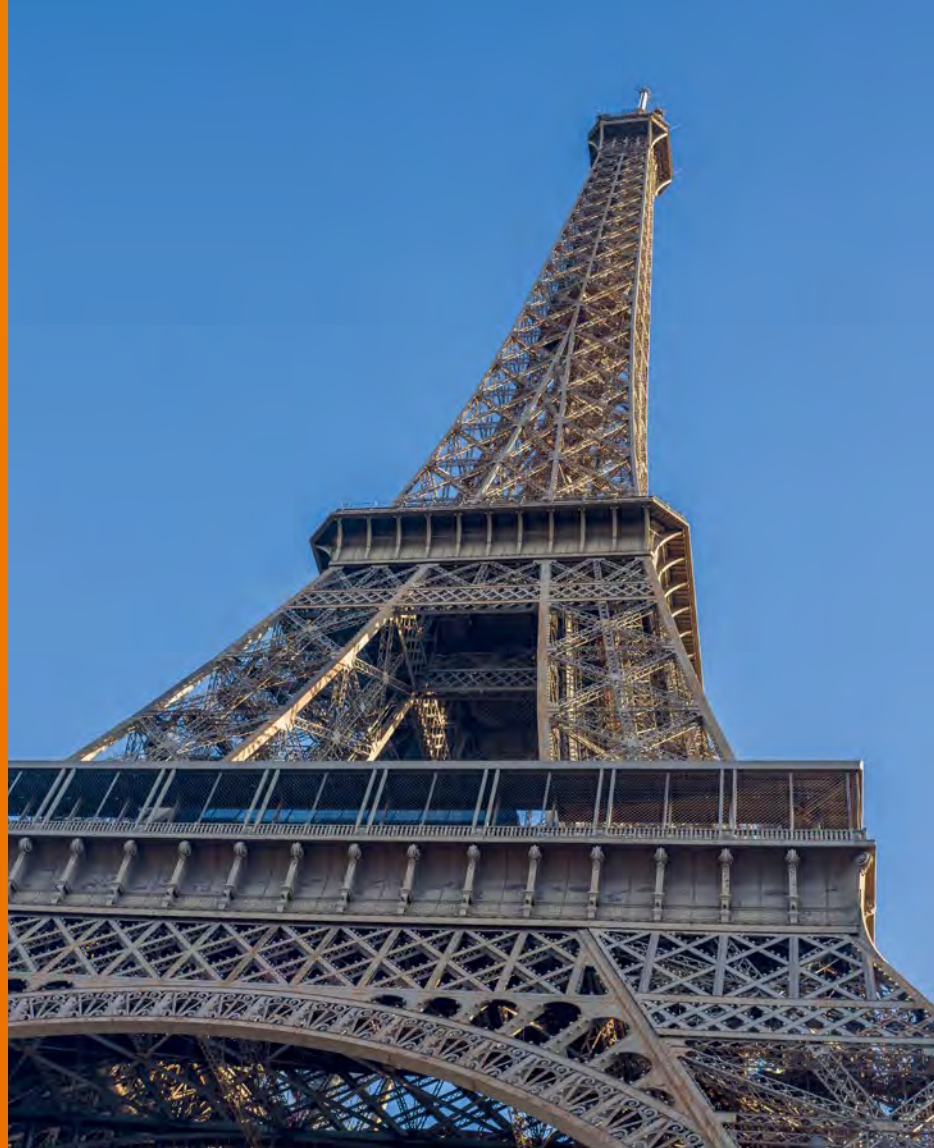
Paris, France

Date of completion
1889

Architect
Gustave Eiffel

Photographer
Martin Rigaud

The construction of the Eiffel Tower was completed in 1889. During recent renovation works, double glazing with SWISSPACER was installed on the second floor of the tower.



PASSIVE HOUSE

Changxing, China

IGU supplier
Harbin Sayyas

Architect
Peter Ruge Architekten GmbH

Photographer
Jan Siefke



IKEA

Wuxi, China

IGU supplier
Saint-Gobain Glass, Shanghai Haojing

Architect
ARUP

Photographer
Novo Chan



HEBEI ACADEMY

Shijiazhuang, China

IGU supplier

Qingdao Hengda Glass
Technology Co., Ltd.
Beijing Jinjing Wisdom Co., Ltd.

Architect

Hebei Academy of Building Research

Photographer

Mr. Xiaoliang LIN, Mr. Bin REN



SINO-BRITISH INNOVATION INDUSTRY PARK

Qingdao, China

City

Qingdao

Country

China

Image

qingdaonews.com



SAINT GOBAIN RESEARCH

Shanghai, China

IGU supplier

Saint-Gobain Glass, DGUI

Architect

Bin GU

Photographer

Fred Zhou

CENTRAL BANK OF IRAQ

Baghdad, Iraq

IGU supplier
Kutas

Architect
Zaha Hadid Architects

Image
Zaha Hadid Architects

Rising from the sloping banks of the Tigris River in Baghdad, the design for the new headquarters of the Central Bank of Iraq (CBI) conveys the core values at the heart of the institution: Solidity, stability and sustainability – among other things, by using the SWISSPACER ULTIMATE spacer, which interrupts the thermal bridge in the glazing edge and reduces energy consumption and the costs for air conditioning the building.



NEW PALACE

Stuttgart, Germany

City
Stuttgart

Country
Germany

Photographer
SWISSPACER



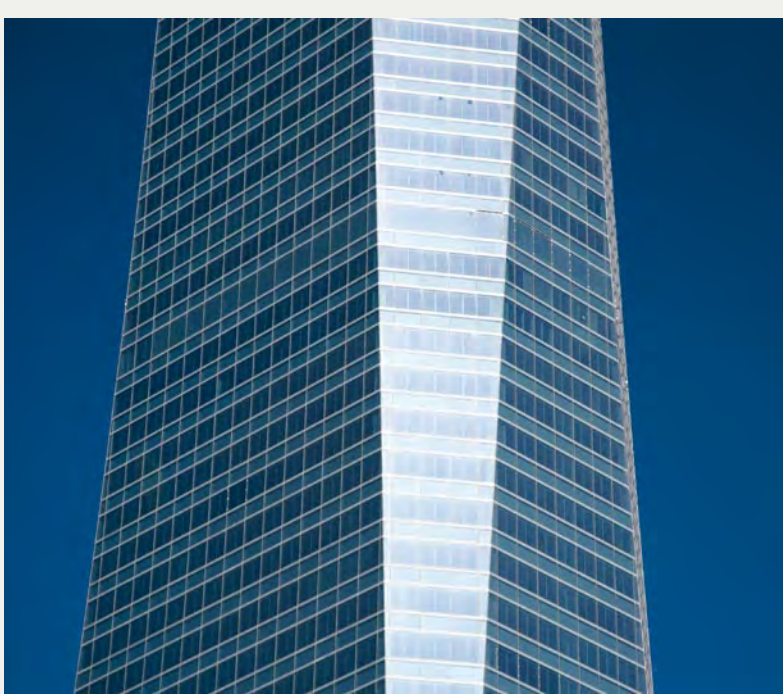
TURNING TORSO

Malmö, Sweden

IGU supplier
Saint-Gobain Glass Espana

Architect
Santiago Calatrava S.A.

Photographer
Emporis GmbH



TORRE DE CRISTAL

Madrid, Spain

Facade construction

Permasteelisa

Architect

Ortiz Leon Architectos S.L.

Pelli Carke Pelli Architects

Photographer

GLASSOLUTIONS La Veneciana



LEEFMILIEU

Brussel, Belgium

City

Brussel

Architect

Cepezed b.v., NL

Photographer

Leon van Woerkom /

Cepezed b.v., NL



PRINCE GEORGE AIRPORT

British Columbia, Canada

IGU supplier

Eckelt Glas GmbH

Architect

mcfarlaneGreen Architecture

+ Design Incorporated

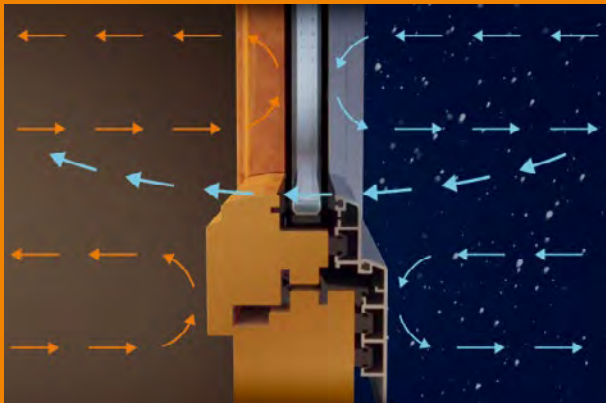
Photographer

mcfarlaneGreen / Steve

McFarlane

Facts & Figures:

Up to EUR 25 heating costs per linear metre at the edge of the glass are saved over the useful life. Given a standard window of 1.23 x 1.48 m, that is over EUR 135. The only prerequisite: using highly efficient spacer bars made of plastic instead of aluminium spacer bars in insulated glass windows. They save real money over the entire useful life of your windows – despite the slightly higher price of a window with a plastic spacer bar.



With an aluminium spacer bar: Due to the high conductivity of the metal, heat gets outside more easily – at the expense of the environment and your wallet.



With a SWISSPACER spacer bar: Thanks to the plastic spacer bar from the innovation leader, the cold bridge is minimised – and the cold stays outside.

Want to find out more?

As our customer, your satisfaction matters to us. That is why we are always happy to be your point of contact and advise you on any questions you may have about energy savings.

Contact us at:

SWISSPACER
Vetrotech Saint-Gobain (International) AG
Zweigniederlassung Kreuzlingen
Sonnenwiesenstrasse 15
8280 Kreuzlingen, Switzerland

T +41 (0)71 686 57 57

info@swisspacer.com
www.swisspacer.com

Did you know
that you can save up to

8.6 %

of your heating
energy and

340 kg

CO₂ per year

if your window contains
a small component?



SWISSPACER
The edge of tomorrow.