

## Swisspacer Georgian Bars

Where aesthetics meet  
energy efficiency.

Engineered in Switzerland

**| swisspacer |**  
SAINT-GOBAIN

the edge  
of tomorrow

## Lower heating costs, premium look – with Georgian bars from Swisspacer.

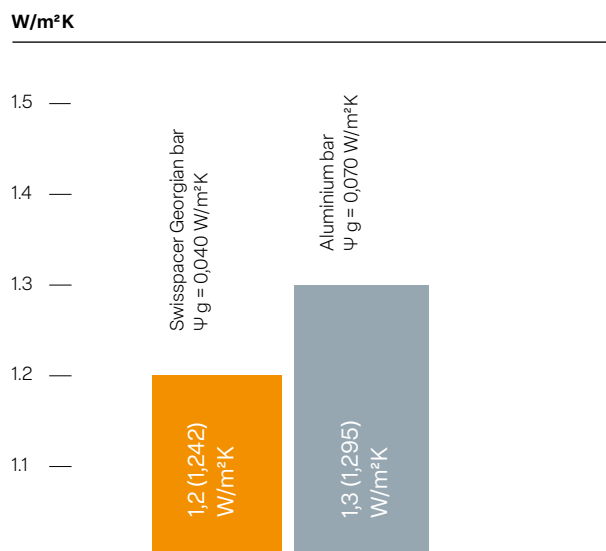
With Georgian bars from Swisspacer you can offer windows that are both aesthetically highly appealing and also of the very finest quality. The Georgian bars are made from the same proven material as the Swisspacer spacer bar and in the popular Swisspacer colours. They therefore improve not only the look but in particular the energy efficiency of every window.

Metal bars inside the insulated glass unit have a negative impact on energy efficiency. According to EN 14351-1, a figure of up to 0,3 W/m<sup>2</sup>K should be added to the U<sub>w</sub> value when using them.

That isn't necessary with the Swisspacer Georgian bar because it's made from the same insulating plastic composite material as the Swisspacer spacer bar. Cold bridging in the insulated glass unit is therefore avoided. Unlike bars made from aluminium, the thermally optimised bars from Swisspacer therefore have only a minor impact on the U<sub>w</sub> value of the window.

This difference can also be illustrated in numbers: Use the Caluwin software to demonstrate these differences with technical values and convince your customers. Caluwin is available as an app for iOS and Android devices, and an online version can also be found on the Swisspacer website.

## The comparison in numbers



<b>Window</b>	Single-sash window Width = 1.23 m; height = 1.48 m
<b>Frame</b>	Aluplast Ideal 8000 U <sub>f</sub> = 1.100 W/m <sup>2</sup> K; 0.586 m <sup>2</sup>
<b>Glass</b>	Climaplust Eclaz 4/4 U <sub>g</sub> = 1,10 W/m <sup>2</sup> K; structure: 4/4; g = 71%
<b>Spacer bar</b>	Swisspacer Ultimate $\Psi_g$ = 0,029 W/m <sup>2</sup> K
<b>Bars</b>	Cross with 2 horizontals; internal

The length-related heat transfer coefficient  $\Psi$  (Psi) is much lower with the Swisspacer Georgian bar than with aluminium bars. The negative impact on the window's energy efficiency is minimised.



## Variants for every need: 13 Sizes – 17 Colours

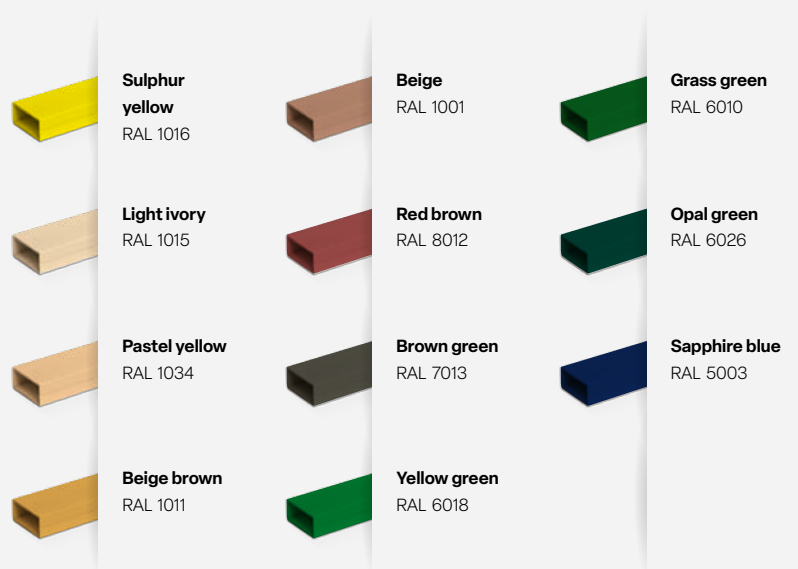
Reconciling the style of years gone by with modern, sustainable solutions – this is the challenge that increasing numbers of residents are offering architects and window manufacturers. In order to meet this rising demand for windows with traditional Georgian bars, SWISSPACER offers an extensive range of 13 different sizes and 17 individual colours. Beyond these, customer-specific versions are also possible.

8 mm	20 mm	08 x 20	08 x 24	08 x 30	
	24 mm				
	24 mm				
	30 mm				
10 mm	20 mm	10 x 20	10 x 24	10 x 30	
	24 mm				
	30 mm				
12 mm	18 mm	12 x 18	12 x 20	12 x 24	12 x 30
	20 mm				
	24 mm				
	30 mm				
14 mm	24 mm	14 x 24	14 x 30		
	30 mm				
16 mm	18 mm	16 x 18			

### Standard colours



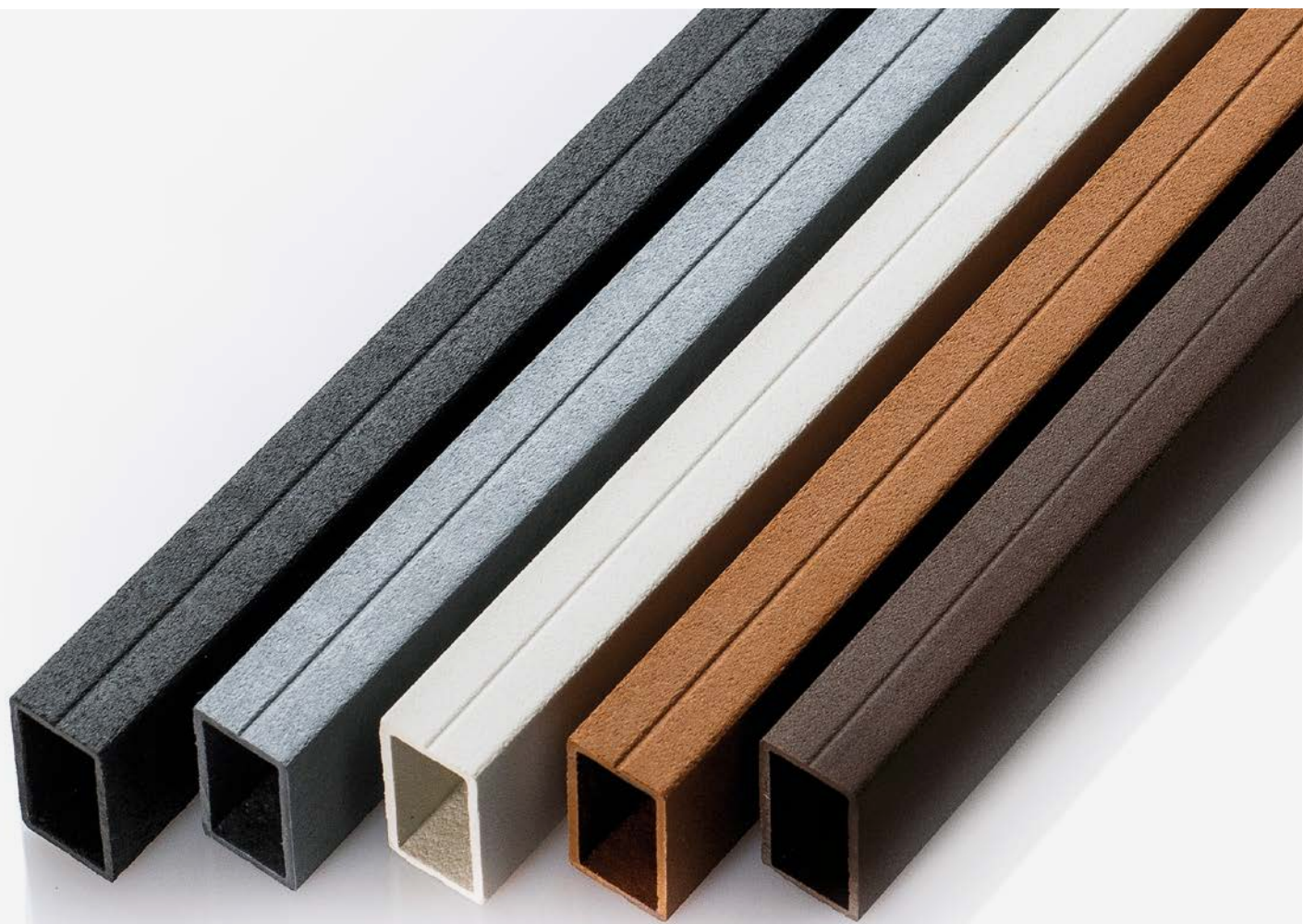
### Special colours on request



All colours are similar to RAL - not identical.

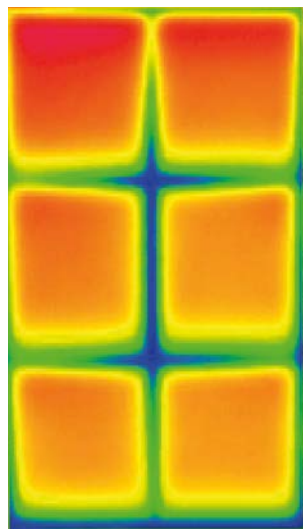
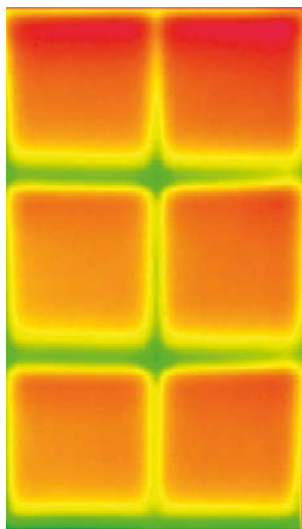
All colours are similar to RAL - not identical.





**with Swisspacer**

**without Swisspacer**



The image taken with a thermal imaging camera shows that the Swisspacer Georgian bar is much “warmer” than conventional bars.

## Extensive Accessories.

In order to execute windows with Georgian bars, the Swisspacer programme has a range of appropriate accessories – in different sizes and exactly matched to the dimensions of the bars. You can obtain transparent versions of the end caps and T-connectors, which enables you to use these accessories for all bar colours and thus minimise stock levels.



Efficient processing options  
for every requirement.

### Crosses



#### Colours

black, grey,  
light brown, dark brown

The number and shape of the slats ensures the best possible clamping of the cross in the bar. For all bars from a depth of 10 mm, the crossing point is shaped so as to prevent the installed bars from rattling (integrated rattle protection).

### Rattle protection



#### Colours

transparent

For crosses where the rattle protection is not integrated, an additional plug can be used at the crossing point.

### T-Connector



#### Colours

transparent

The Swisspacer T-connectors have no end stop, which ensures jointless coupling points. Thanks to the transparent design, the T-connectors can be used for all colour variants, reducing the amount you need to keep in stock.

### End caps



#### Colours

black, grey,  
light brown, dark brown

The end caps can be quickly and easily clamped. Alternatively, the bars are pre-drilled and then screwed to the plug. The integrated, centred screw channel ensures exact, straight fixing.

## Did you know?

Swisspacer Air is the innovative solution for pressure-equalised insulating glass.

More information: [www.swisspacer.com](http://www.swisspacer.com)

You know the problem: Differences in altitude and climatic stresses lead to build-up of excess or negative pressure in the insulating glass. The resulting tension can lead to glass breakages and premature ageing.

With Swisspacer Air you can avoid these critical conditions: The little component works to equalise the pressure between the surrounding environment and the cavity between the panes, which minimises the risk of breakage during transport over different heights. What's more, Swisspacer Air also makes it possible to safely create larger cavities between the panes which also delivers other advantages – such as improved sound insulation.

### So what does that have to do with windows fitted with Georgian bars?

The pressure equalisation provided by Swisspacer Air prevents the panes in an insulated glass unit from bulging outwards excessively. The little component therefore minimises the risk of external decorative bars detaching from the profile and glass..



## Find out more about our services.

Swisspacer spacer bars can be processed using various methods to suit individual requirements. In addition to classic, manual frame production, automated processing with welding systems or bending machines is also possible. It goes without saying that curves and various special shapes are also possible. Our delivery portfolio also includes the necessary accessories.

### Do you have any questions about the product or its processing?

Swisspacer supports you with a comprehensive service – from the initial consultation to training in production for optimised frame and insulating glass production with the Swiss warm edge.