



Swisspacer Advance

The warm edge with
the best price-
performance ratio.



the edge
of tomorrow



Swisspacer Advance is the mid-range spacer bar with the best price-performance ratio. The low thermal conductivity of the high-performance spacer bar contributes to the high energy efficiency of every insulating glass unit.

Compared with conventional metal spacer bars, the Swisspacer Advance spacer bar reduces the Psi value - i.e. the linear heat transfer at the glass edge. That ensures improved U_w values for windows and façades.

The improved thermal values at the glass edge not only save energy, they also reduce the risk of condensation and mould forming, thus ensuring increased living comfort.

Swisspacer also impresses in terms of its looks: the high stability of the spacer bar profile ensures an exceptional parallelism of the frame and thus the best look in the window, especially for insulating glass units with triple glazing. The matt surface avoids unpleasant reflections; thanks to the scope of supply including 17 different colours, the insulating glass unit can adapt to the individual appearance of a window.



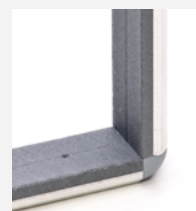
Efficient processing options for every requirement


Swisspacer spacer bars can be processed with various methods entirely to suit individual requirements. Apart from classic frame manufacture by hand, automated processing using welding systems or bending machines is also possible. As you would expect, curves and various special shapes can also be made. Our portfolio also includes the necessary accessories.

Do you have any questions about the product or its processing? Swisspacer can assist with comprehensive service – from the initial consultation to training on production regarding the optimal manufacturer of frames and insulating glass units with the Swiss warm edge.




 Welded corner



 Push-fit corner



 Rounded corner



Find out more about our services.

<https://www.swisspacer.com/en/services>

Available widths

8 mm	10 mm	11 mm	12 mm	14 mm	15 mm	16 mm
18 mm	20 mm	22 mm	24 mm	27 mm	32 mm	



Standard colours



All colours are similar to RAL - not identical.

Special colors

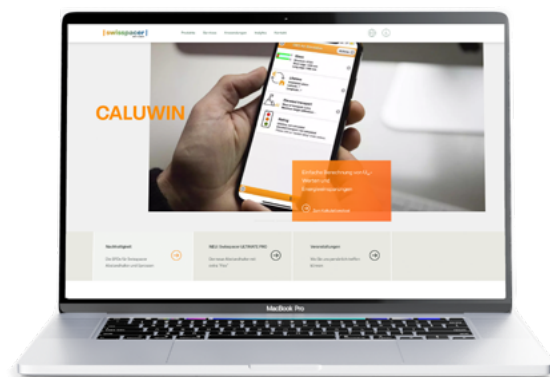


All colours are similar to RAL - not identical.



You can find all product information, data sheets and EPDs here:

www.swisspacer.com/en/downloads



While in use, Swisspacer Advance saves energy costs and thus also a large amount of CO₂. The spacer bar itself is demonstrably also the most carbon-friendly alternative on the market – as proved by the Swisspacer EPD (Environmental Product Declaration). The document provides detailed data on the environmental impacts of the spacer bars on the basis of a life cycle analysis (LCA).

With the Caluwin calculation tool, you can quickly and easily calculate potential energy savings through the use of Swisspacer. This, in combination with our EPD, gives you the opportunity to select low-emission products for your insulating glass units and support your customers in obtaining building certifications such as DGNB, LEED or BREEAM.

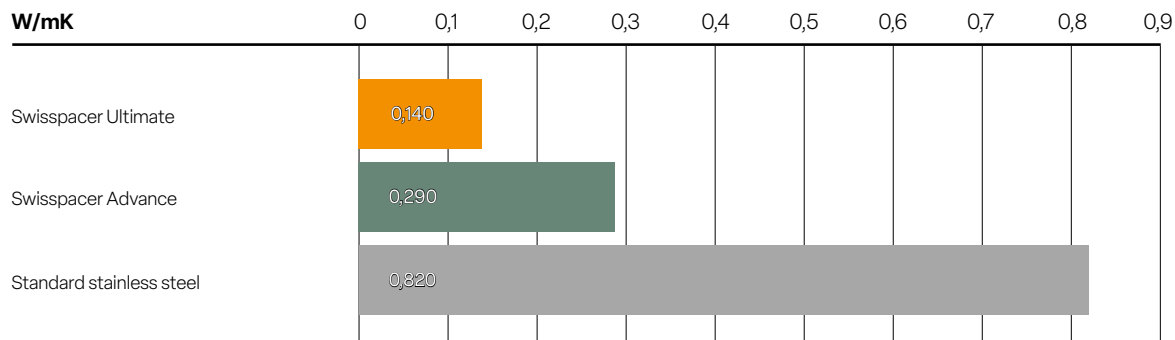
Psi values compared

Window system W/m ² K	Wood 1,4 – 1,3	Plastic 1,2	Wood + aluminium 1,4	Aluminium 1,6	
Glazing	Double triple glazing				
Spacer bar	Aluminium	0,082 0,089	0,076 0,078	0,094 0,100	0,110 0,120
	Stainless steel	0,053 0,054	0,051 0,050	0,059 0,060	0,068 0,064
	Swisspacer Advance	0,039 0,037	0,039 0,037	0,042 0,040	0,047 0,042
	Swisspacer Ultimate	0,031 0,029	0,032 0,030	0,032 0,030	0,036 0,031

Double glazing insulating glass unit: 4-16-4 (U_g = 1,1 W/m²K) | triple glazing insulating glass unit: 4-12-4-12-4 (U_g = 0,7 W/m²K)
 Quelle: ift Rosenheim WA-08/3 (Warm Edge working group) / BF Window data sheets



Thermal conductivity compared



Equivalent thermal conductivity in W/mK according to EN 12664:2001-01 and ift guideline WA17/1

Did you know?

Swisspacer Air is the innovative solution for pressure-equalised insulating glass units.

More information: www.swisspacer.com

